

**Lake County Modelers & Flyers Association
Presents**

44th Parallel Pylon Race

**LCMFA Flying Site – Baldwin Municipal Airport, Baldwin, MI
Saturday & Sunday, August 5 & 6, 2017**

NMPRA EF1 – Entry Fee \$25 – Saturday Only

AMA 424 Q500 – Entry Fee \$25 Each Day – Saturday & Sunday (Engine: TT-40 Pro or Evo 46)

AMA 426 Q500 – Entry Fee \$35 – Saturday Only

AMA 422 Q40 – Entry Fee \$35 – Sunday Only

Field will be open for practice Friday 12:00 PM – 6:00 PM

Saturday – Short Course for EF1, 424 & 426

Sunday – Long Course for 424 & 422

Pre-registration Available at: www.capsracing.com

Registration: 7:30 – 8:30 AM Each Day

Pilots Meeting: 8:30 – 8:45 AM

First Heat: 9:00 AM

For further information contact:

CD Scott Farnsworth – (269)-312-9239 E-mail: farney18@hotmail.com

Fuel Provided

Raffle

Motels and campground are within one mile of the airport entrance.

Visit www.lcmfa.com for directions and information on places to stay in the Baldwin area.



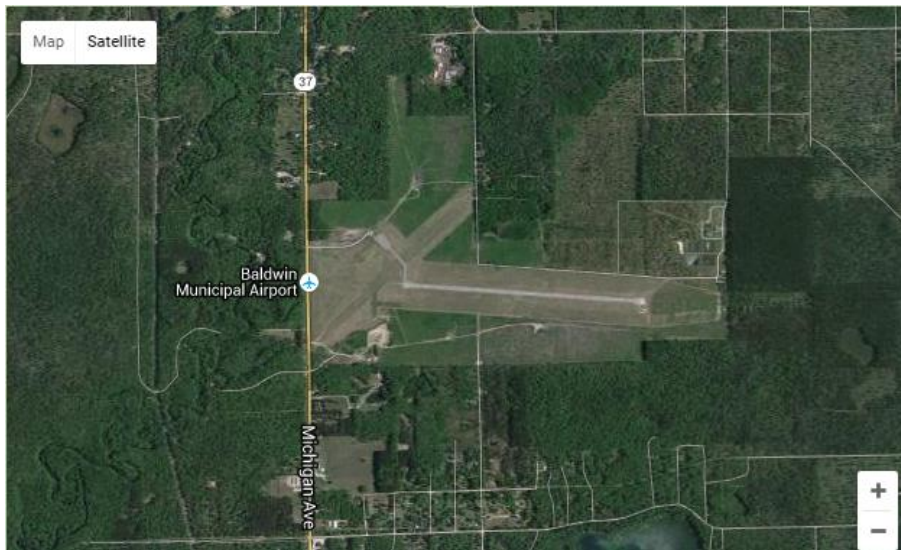
Directions:

From Grand Rapids, MI

Take US 131 north to US-10 (exit 153, Ludington/Clare), go west on US-10 16.5 miles to M-37. Head south on M-37 through Baldwin approximately 2 miles, airport entrance is on the left off of M-37.

From Traverse City, MI

Take M-37 south to Baldwin, continue through Baldwin approximately 2 miles, airport entrance is on the left off of M-37.



Lodging:

Baldwin Bait & Tackle

9425 South M-37
Baldwin, MI 49034
231-745-4779

www.fishbaldwin.com

Outdoor Inn

7176 South M-37
Baldwin, MI 49034
231-745-3137

www.OutdoorInnBaldwin.com